

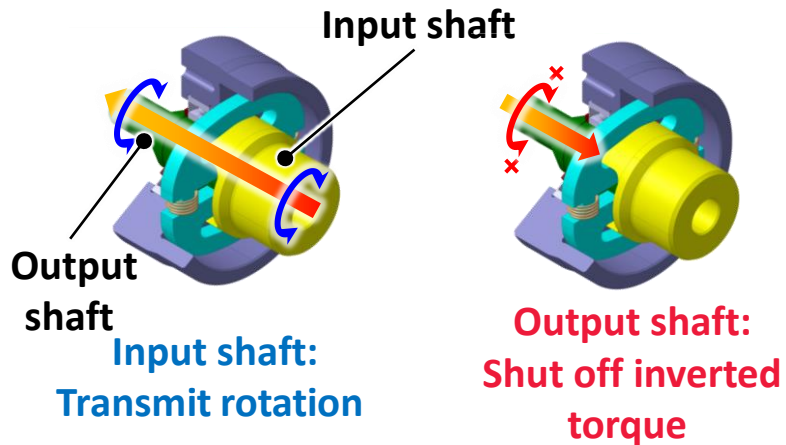
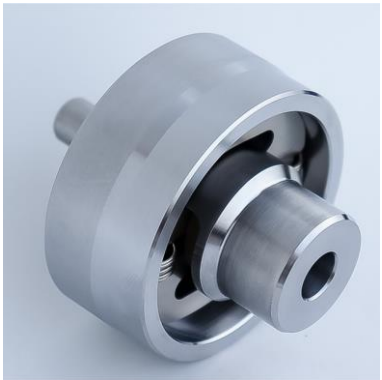
Locking Clutch

NSK

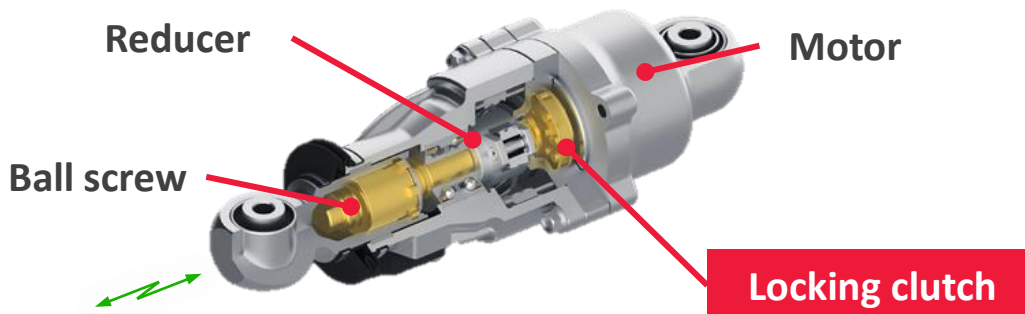
High-efficiency locking mechanism that requires no electrical power

New Products

Early Prototype



Installation example: Linear actuator



Features

- ✓ Maintain locked state with no power consumption
- ✓ Locked state can be released with low torque
- ✓ Excellent affinity with high-efficiency ball screw and prevents reverse operation due to external disturbances

| Housing outer dia. | Ø36 | Ø54 | Ø66 |
|--------------------|-------|-------|--------|
| Rated torque | 3.1Nm | 3.9Nm | 11.2Nm |

Why NSK ?

NSK's tribology technology developed in bearings enables friction control

Copyright NSK Ltd. All Rights Reserved.

Change & Go Beyond