

# Long-Life DH/DS Models



## Doubled life clears the way for more stable operation and space savings



### Features

- 2x longer life\* with identical external dimensions
- Downsize equipment while maintaining life

\*Compared to standard series

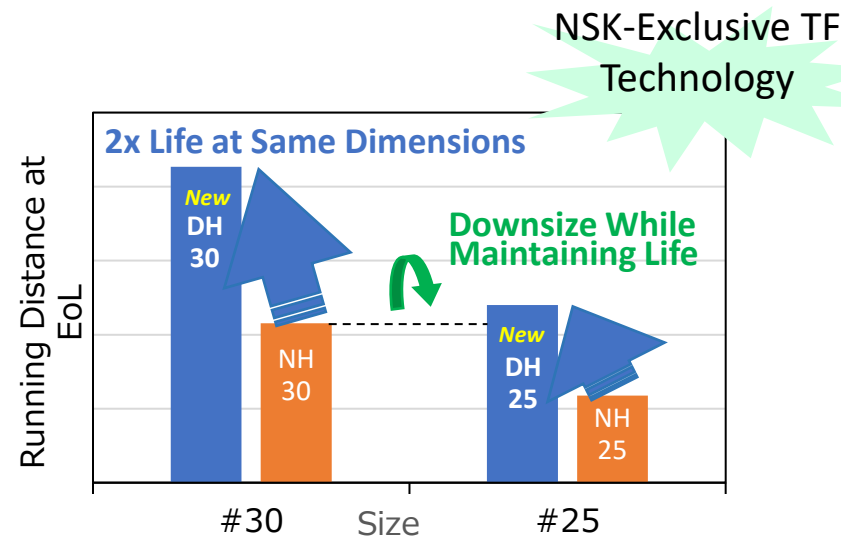
#### Compatible with existing mountings

- ✓ Ensure stable operation long-term with no need for costly design changes.
- ✓ Improve productivity with longer running distance.

Pat. Pend.

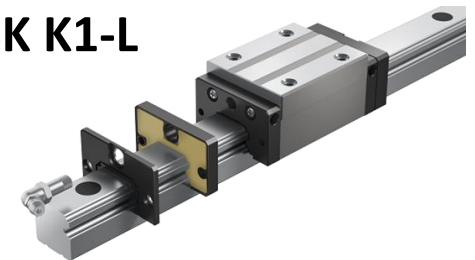
#### Allows for smaller and lighter equipment

- ✓ Save space and weight while maintaining equipment reliability



Compatible with lubrication units!

### NSK K1-L



Enjoy less maintenance, with 2x the lubricant supply period\*.

\*Compared to NSK K1

## Reduced frictional variation provides even smoother movement



## Features

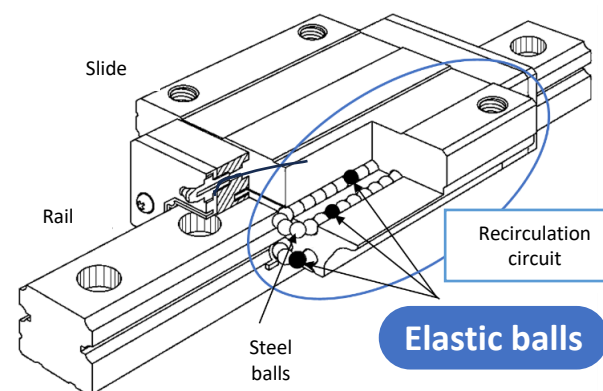
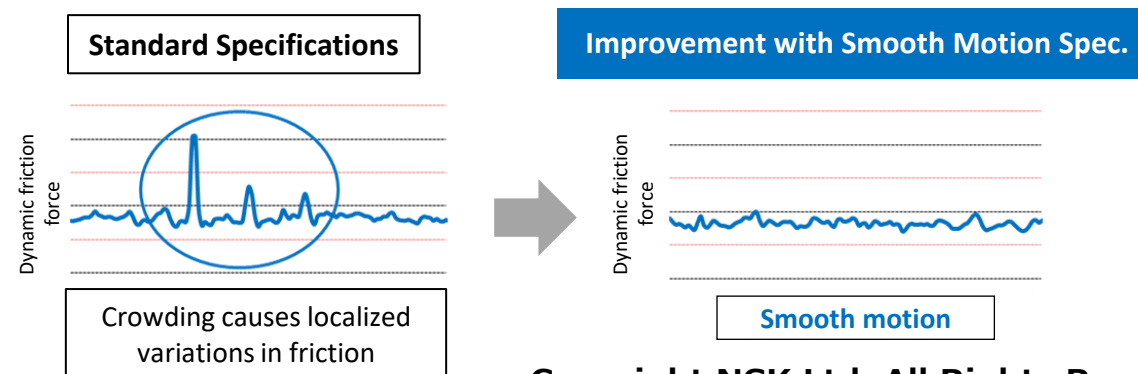
- ① Reduces crowding of balls in recirculation circuit
- ② Fully compatible with existing mountings (standard NH/NS models)

Supported Models/Sizes

NH15–25, NS15–30

Configuration With Smooth Motion Spec.

Pat. Pend.

Friction with Smooth Motion Spec.

Copyright NSK Ltd. All Rights Reserved.

MORE THAN PRECISION