

## NH / NS Series Linear Guides

NSK Linear guides from the NH and NS series offer maximum precision combined with extremely high load ratings. Outstanding accuracy means that the object in motion is positioned precisely and moves optimally. It also guarantees smooth, even running. These linear guides are used for a wide variety of tasks, including applications in medical technology, the semiconductor industry, measuring machines, and machine/plant construction in general.

### Product Features

- High-speed design as standard
- Extremely high load rating
- High level of precision in different classes
- Self-aligning feature: accommodates misalignment and minimises internal loads
- Optional extras:- K1-L long-term lubrication unit- Various different wipers- High-temperature design- Special materials and coatings - High performance seal V1
- Quiet running
- Various preload categories

### Benefits

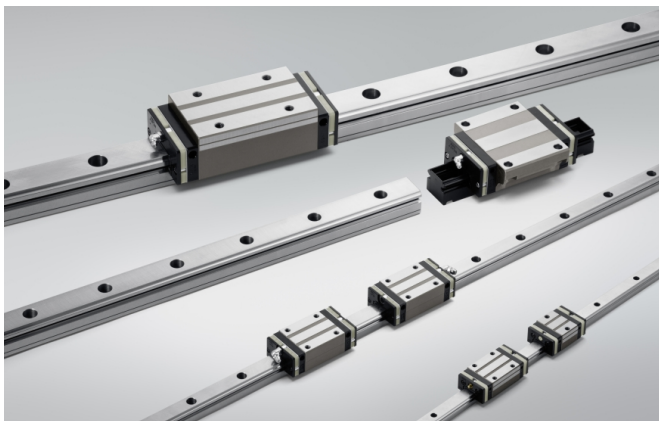
- Unlimited rail length as individual sections can be used together
- Optimum absorption of impact loads
- First-rate running characteristics and easy assembly
- Higher load ratings make it possible to double service life
- Clear product range due to standardisation

### Condition Description

- High Accuracy
- High Load
- High Speed
- Low Noise
- Misalignment

### Industries

- Machine Tools
- Material Handling
- Medical and Health Care
- Semiconductor
- Woodworking



NH 30 1200 AN C 2 \_\*\* P5 3

#### Description

NH	Series name
30	Size
1200	Rail length (mm)
AN	Ball slide shape code
C	Material/surface treatment code
2	Number of ball slides per rail
_**	Design serial number
P5	Accuracy code
3	Preload code